



THE LARGEST

**HOME, CONSTRUCTION & INTERIOR EXPO
IN KANDY**

13 14 15 NOVEMBER
2026

**KCC
KANDY**



Welcome to BuildFirst Expo Kandy Year End Edition 2026

“

We are proud to present the 03rd edition of BuildFirst Expo Kandy, continuing its journey as a leading platform for the home, construction, and interior industry in Sri Lanka.

Following the successful editions held earlier, this Year End Edition marks our second BuildFirst Expo in 2026, further strengthening our commitment to connecting industry professionals with potential customers and business partners.

With over 08 years of experience in the exhibition industry, Ceylon Exhibitions continues to create impactful platforms that generate real business opportunities.

”

“We invite you to be part of this growing industry event.”



Malaka Godagama

Director
Sales & Customer Relationship



Sajith Gunathilaka

Director
Marketing & Operations



About

BuildFirst Expo Kandy Year End Edition 2026

BuildFirst Expo is proudly recognized as the only and largest exhibition in Kandy dedicated to the home, construction, and interior industry in Sri Lanka. Returning for its 3rd successful edition, the event continues to grow as a powerful platform that brings together leading brands, innovators, and industry professionals.

Following the success of previous editions, BuildFirst Expo Kandy 2026 provides a unique opportunity for businesses to showcase their products and services while connecting directly with homeowners, builders, and key decision-makers.

Exhibitors will have the chance to present the latest trends, technologies, and solutions, positioning their brands at the forefront of the construction and home improvement industry.

Event Highlights

- 3-Day industry exhibition
- Direct customer engagement
- Product demonstrations
- Business networking opportunities
- Strong promotional campaign



Why Exhibit at BuildFirst Expo Kandy 2026?

- Connect with home builders & property owners
- Generate high-value business leads
- Showcase your products & services directly
- Build strong brand visibility
- Network with industry professionals

A powerful platform to grow your business in the construction sector



Meet Your Ideal Customers

- Individuals Planning to Build or Renovate Homes
- Property Owners & Investors
- Architects & Engineers
- Contractors & Builders
- Interior Designers
- Government Officials & Regulators
- Students & Industry Aspirants
- General Public & Enthusiasts



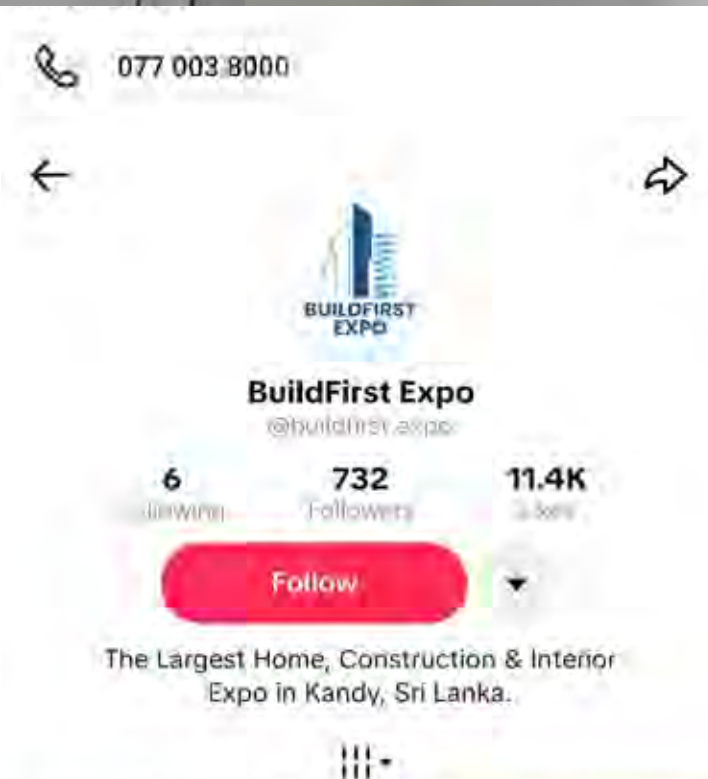
Who Should Exhibit?

- Property Developers & Real Estate Companies
 - Architectural Firms & Consultants
 - Home Textiles (Curtains, Carpets, Upholstery)
 - Solar Panels & Power Supply Systems
 - Steel, Aluminium & Metal Works
 - Interior Design Solution & Services
 - Civil & Structural Engineering
 - Ceiling Decorators
 - Timber & Engineered Wood Products
 - Cement, Bricks & Concrete Products
 - Kitchens & Wardrobes
 - Tiles, Granite & Flooring
 - Paints, Waterproofing & Adhesives
 - Electrical Fitting & Wiring Solutions
 - Doors & Windows (Wood, Aluminium, uPVC)
 - Roofing, Flooring & Wall Materials
 - Smart Home & Security Systems
 - Landscaping & Outdoor Solutions
 - Home Furniture
 - Bathroom Fittings
 - Sustainable & Green Building
 - Tools, Machinery & Equipment
 - Pantry Cupboards
 - Banks, Finance & Insurance Companies
 - Heating, Ventilation & Air Conditioning HVAC Systems
 - Safety Equipment & Accessories
- And More...

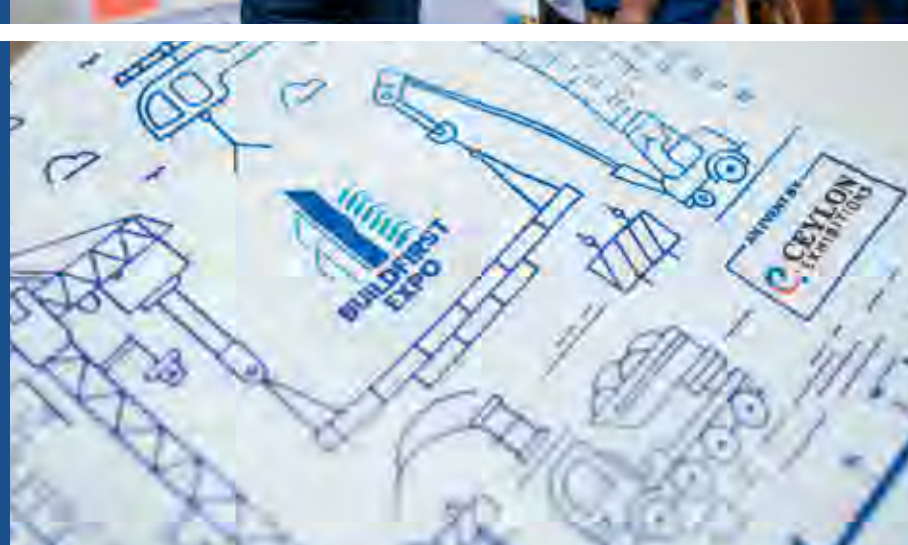
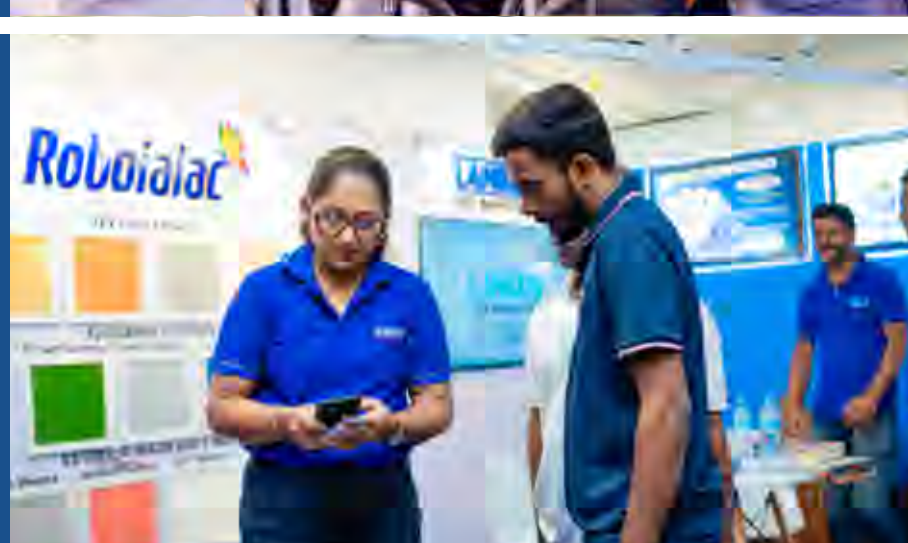


Our Marketing Campaign

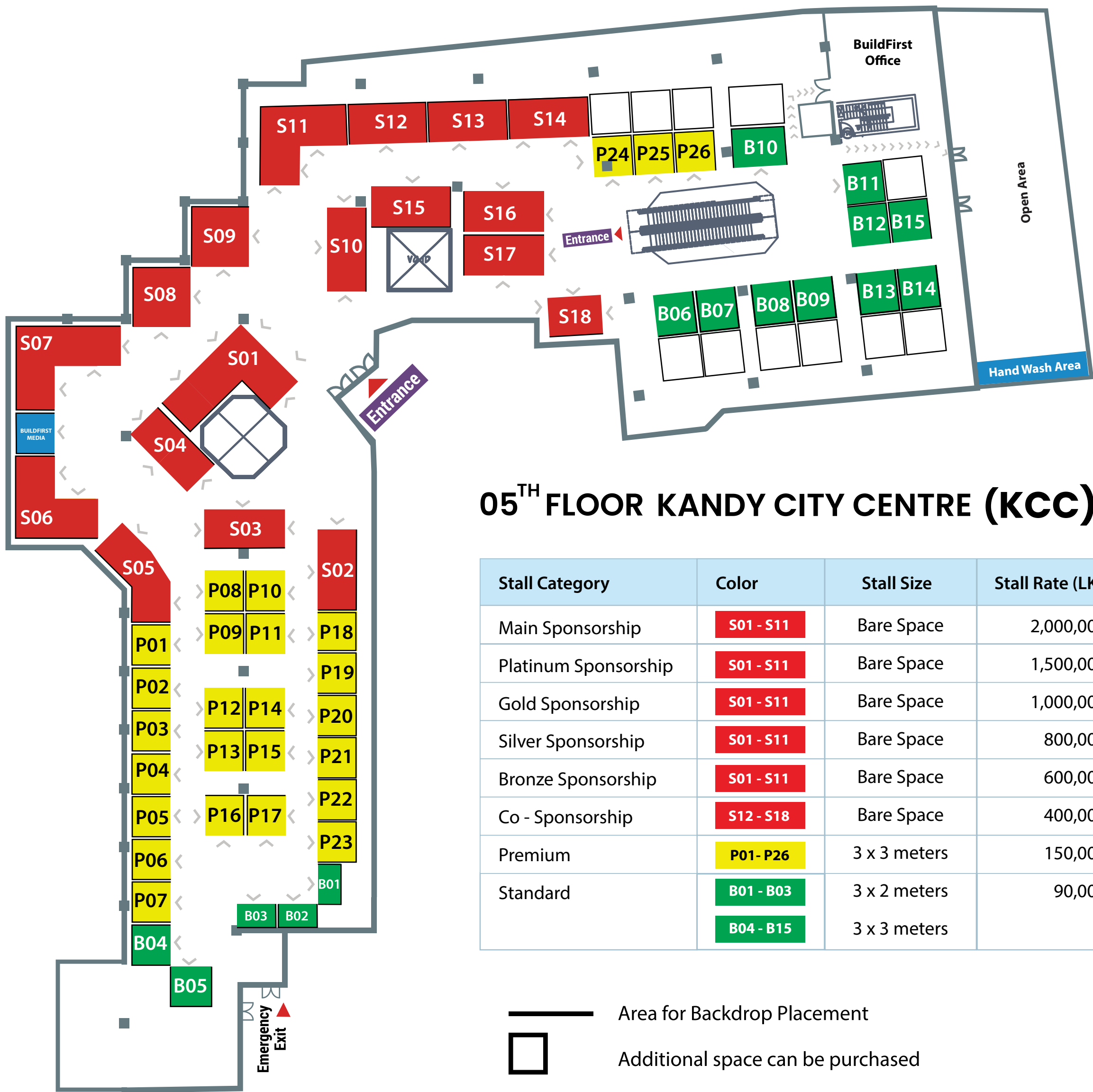
- Social Media (FB, IG, TikTok)
- Outdoor Branding (banners, hoardings)
- Influencer Collaborations
- SMS / WhatsApp Campaigns
- Targeted audience outreach
- TV, Radio Promotions
- Email Campaigns
- Leaflet Distribution
- Paper Advertisements
- Poster Campaigns



Moments from Previous Expos



Floor Plan & Rate Card



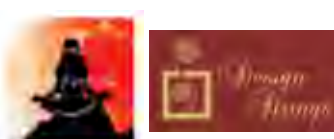
Stall Category	Color	Stall Size	Stall Rate (LKR)
Main Sponsorship	S01 - S11	Bare Space	2,000,000
Platinum Sponsorship	S01 - S11	Bare Space	1,500,000
Gold Sponsorship	S01 - S11	Bare Space	1,000,000
Silver Sponsorship	S01 - S11	Bare Space	800,000
Bronze Sponsorship	S01 - S11	Bare Space	600,000
Co - Sponsorship	S12 - S18	Bare Space	400,000
Premium	P01 - P26	3 x 3 meters	150,000
Standard	B01 - B03	3 x 2 meters	90,000
	B04 - B15	3 x 3 meters	

- Area for Backdrop Placement
- Additional space can be purchased

Sponsorship Packages

Sponsor Category	Main Sponsorship	Platinum Sponsorship	Gold Sponsorship	Silver Sponsorship	Bronze Sponsorship	Co-sponsorship
Prominent exhibit space	Bare Space	Bare Space	Bare Space	Bare Space	Bare Space	Bare Space
Your logo on all TV, Printed, Digital, Outdoor & other advertising materials	✓	✓	✓	✓	✓	✓
Your logo on all venue branding	✓	✓	✓	✓	✓	✓
A special video on Social Media	✓	✓	✓	✓	✓	✓
Allocation of space for placing flags in the exhibition venue	25 Flags	20 Flags	15 Flags	10 Flags	08 Flags	05 Flags
Audio announcements from the PA (Public Address) system during the days of the exhibition at the premises	60 announcements per day	50 announcements per day	40 announcements per day	30 announcements per day	20 announcements per day	10 announcements per day
Direction floor stickers will be provided with name & logo	✓	✓	✗	✗	✗	✗
Speech at inauguration ceremony	✓	✓	✗	✗	✗	✗
Investment	2,000,000 LKR	1,500,000 LKR	1,000,000 LKR	800,000 LKR	600,000 LKR	400,000 LKR

Previous Sponsors & Exhibitors





**BUILDFIRST
EXPO**

**THE LARGEST
HOME CONSTRUCTION &
INTERIOR EXPO
IN KANDY**

Book Your Stall Today

070 40 40 000 | 077 00 38 000 | 077 51 50 575 | 0777 42 80 83



CEYLON EXHIBITIONS & CORPORATE SERVICES

City Office

2-G18, Bandaranaike Memorial International
Conference Hall (BMICH),
Buddhaloka Mawatha, Colombo 07 - Sri Lanka

Corporate Office

169/2/3, Colombo Road, Pilimathalawa,
Kandy - Sri Lanka

 www.buildfirst.lk | www.ceylonexhibitions.com